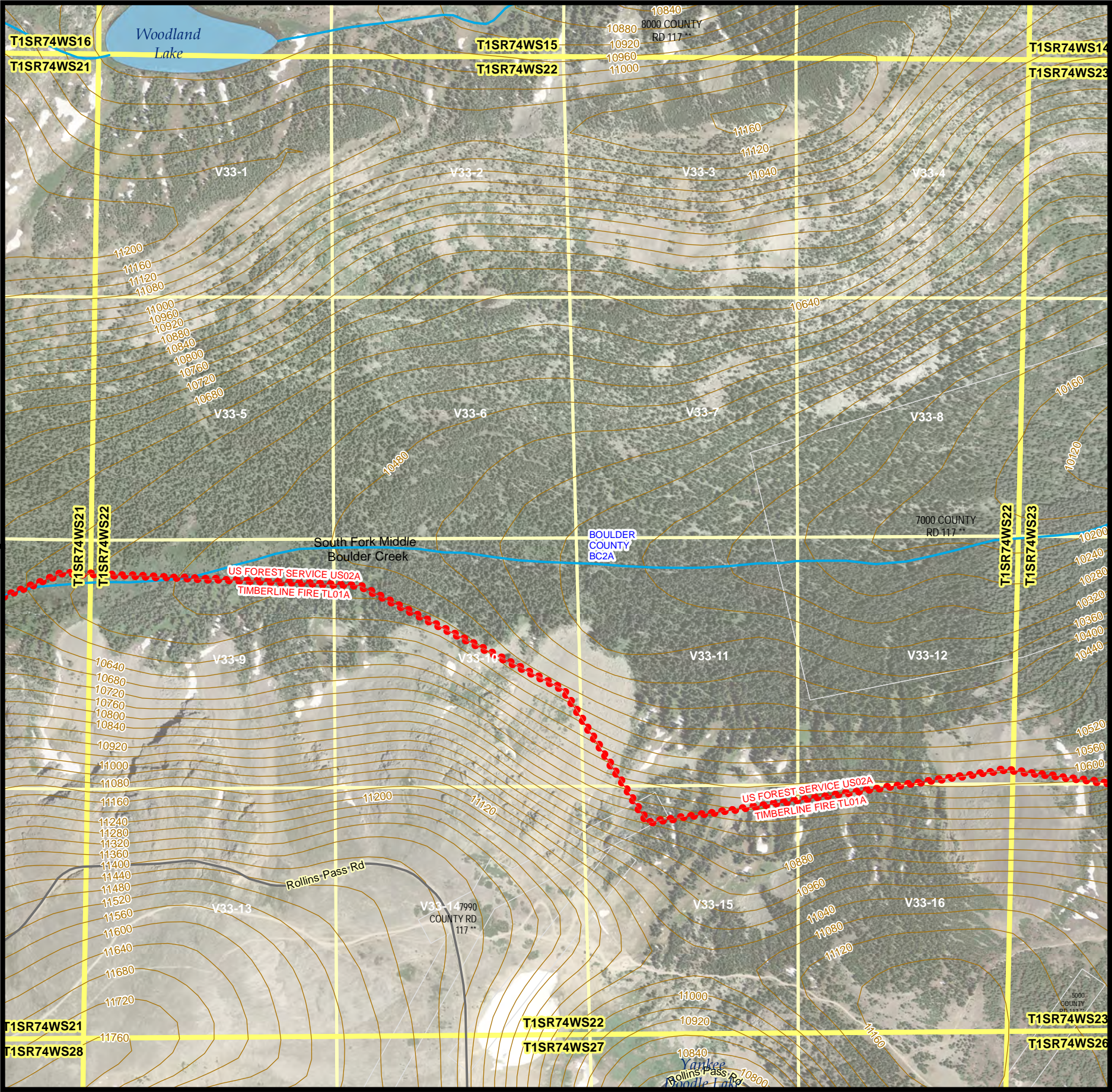
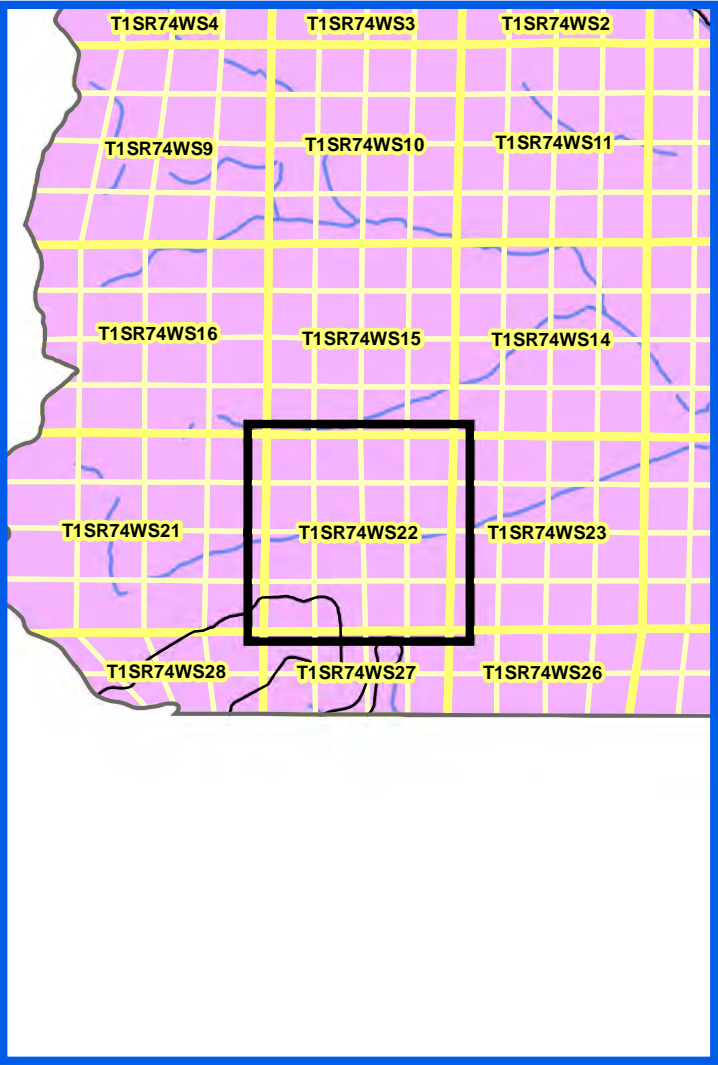
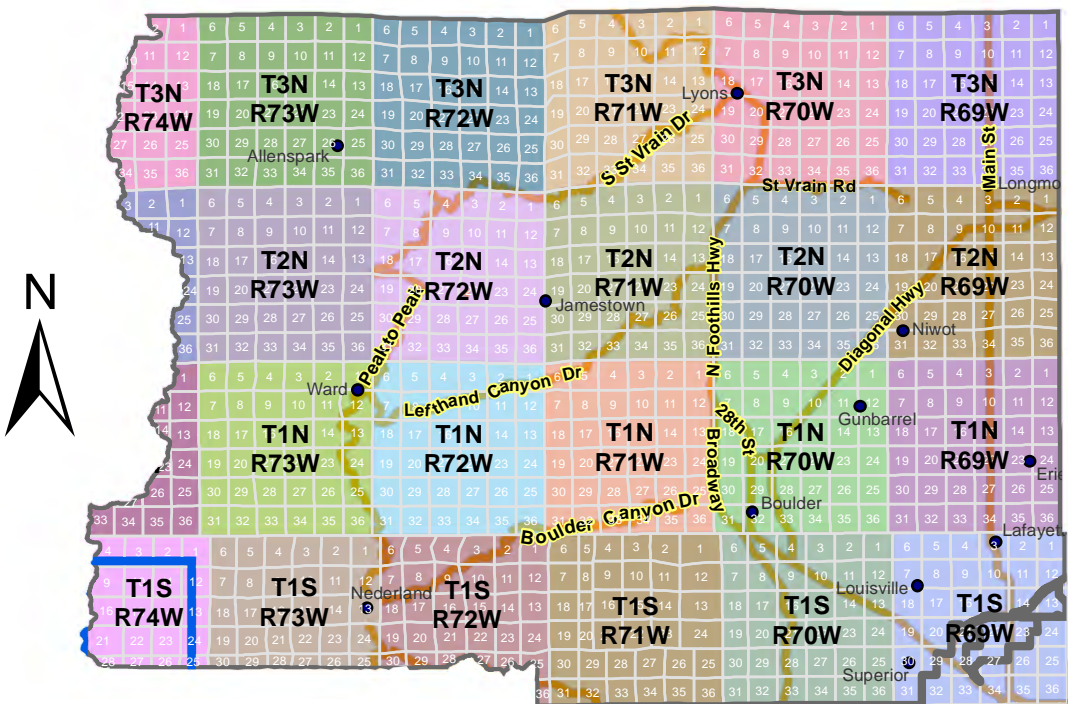


# Township 1S, RANGE 74W, Section 22



## Boulder County



- Boulder County Boundary
- Municipal Boundaries
- Fire Response Areas (Red Text)
- Law Response Areas (Blue Text)
- Fire Hydrants
- Buildings and Structures
- Sections
- Quarter/Quarter Sections
- Parcels (Address in Black)
- Lake/Reservoir/Marsh, etc.
- Floodplain (100 Yr)
- Stream/Slough
- Intermittent Stream
- Contours (40 Ft)
- Trails
- HazMat TierII Facilities
- Fire Stations
- Police Stations
- EMS Facilities
- Hospitals
- Ambulatory Surgical Centers
- Assisted Living Residences
- Community Health Clinics
- EMS Ambulance Agencies
- Additional Healthcare Facility
- Group Homes/Disabled
- Home Health Agencies
- Nursing Homes
- Hospices
- Red Cross Shelters
- Warning Sirens
- Sheriff Communications
- County Facilities
- Municipal Facilities
- Longmont Facilities
- Schools
- Libraries
- Power Plants
- Wastewater Treatment
- Mile Markers

This map is for illustrative purposes only and the features depicted on it are approximate. More site specific studies may be required to draw accurate conclusions. Boulder County makes no warranties regarding the accuracy, completeness, reliability, or suitability of this map. Boulder County disclaims any liability associated with the use or misuse of this map. In accessing and/or relying on this map, the user fully assumes any and all risk associated with the information contained therein.

Author: Boulder County GIS  
Data Sources: Boulder County  
Land Use Dept., City of Boulder, City of Longmont  
Date: April 5, 2013

0 0.5 1 Miles

Scale 1: 7600 2012 Aerial Imagery 11 X 17 Print Size